

# Kvarteret Slussen 1

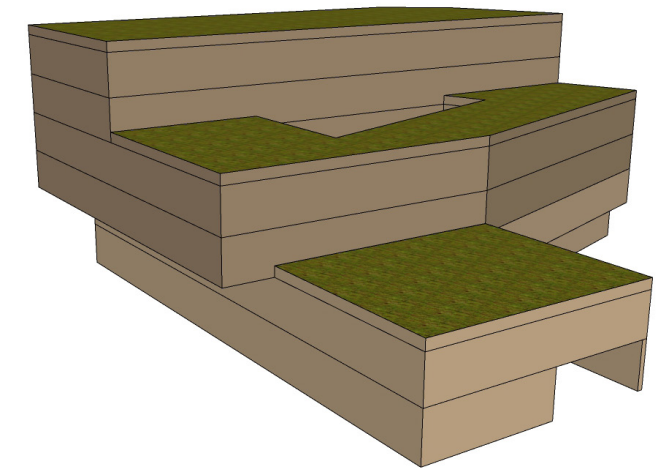
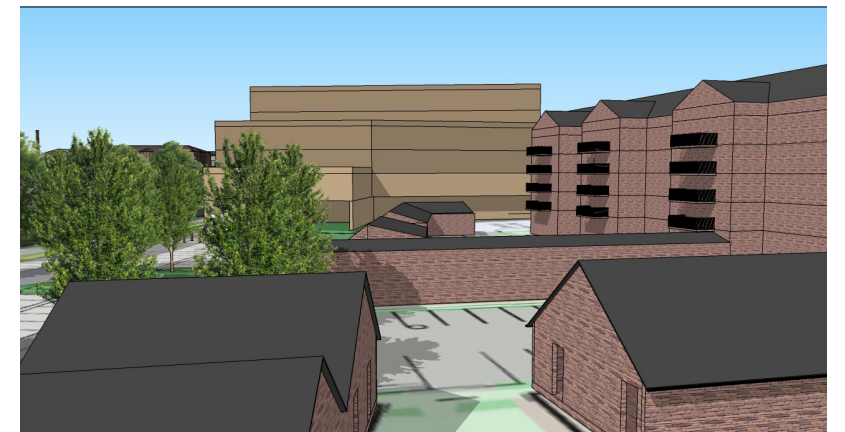
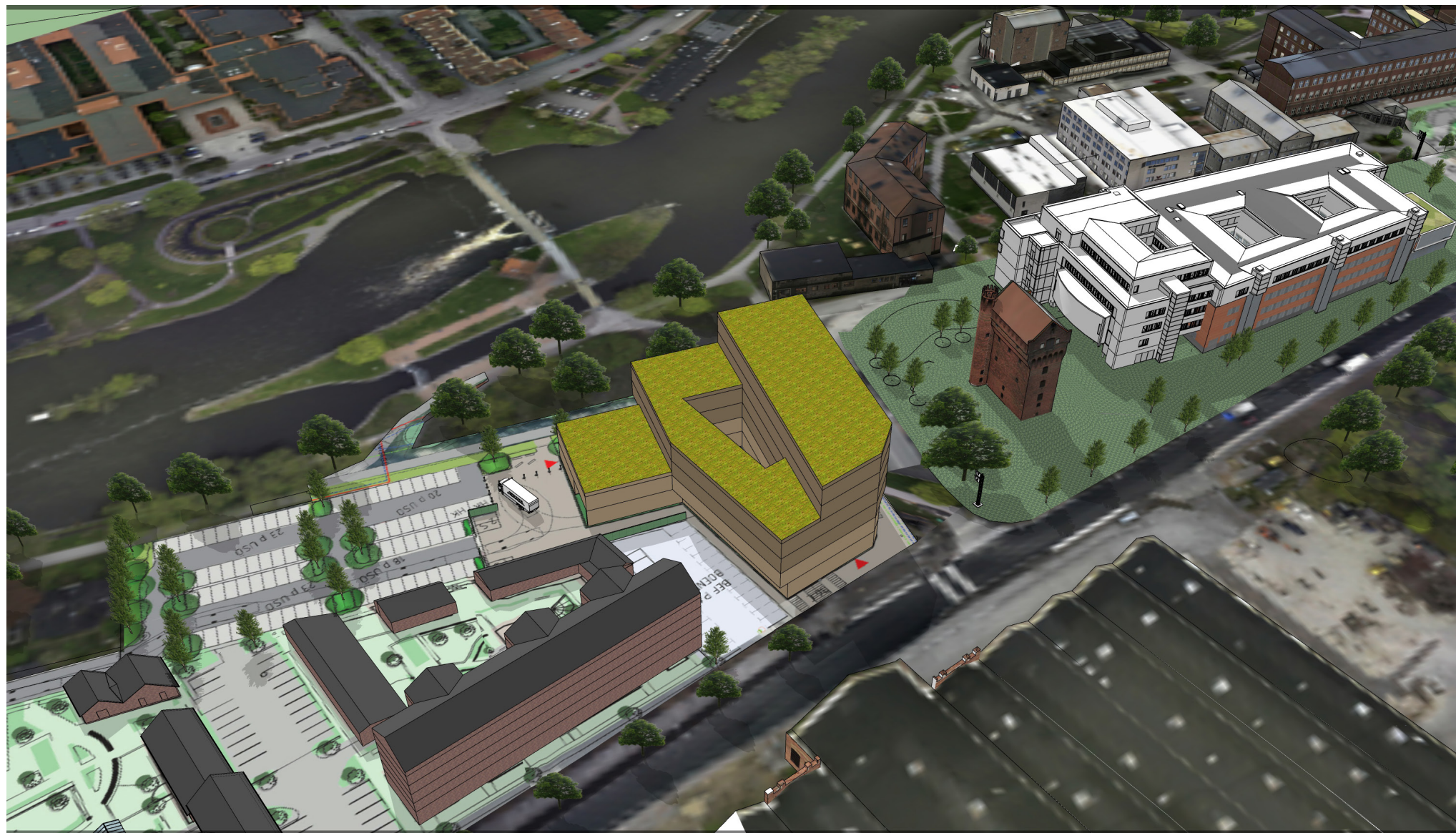


Campus USÖ

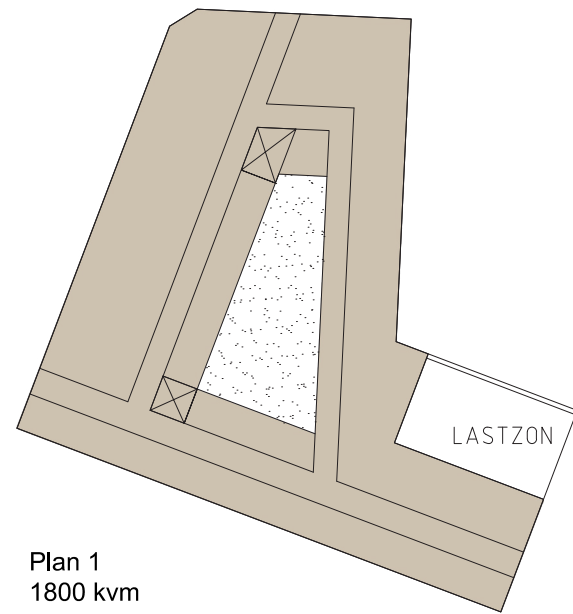
Tornet, Campusparken

Ny byggnadsvolym

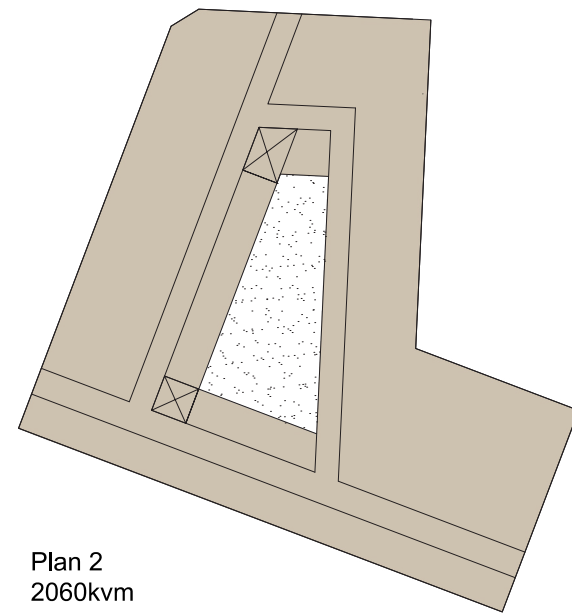
BRF Slussparken



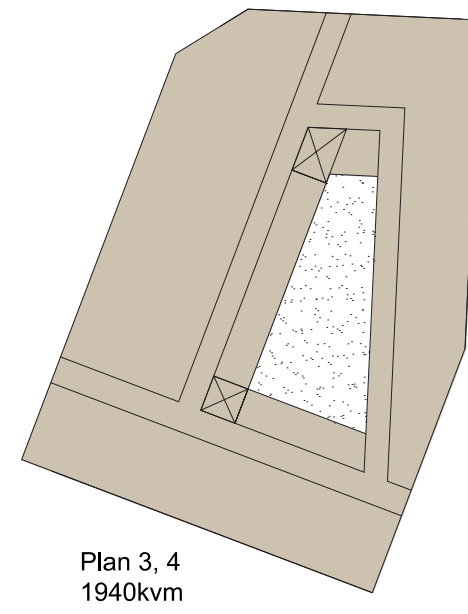




Plan 1  
1800 kvm

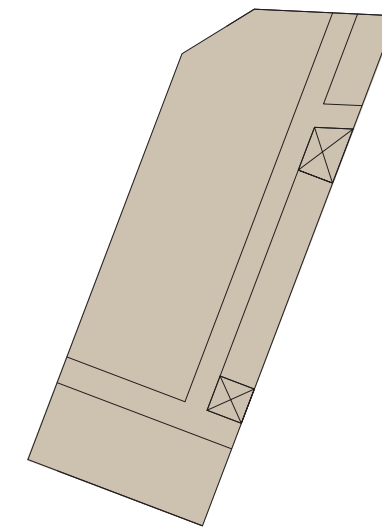


Plan 2  
2060kvm

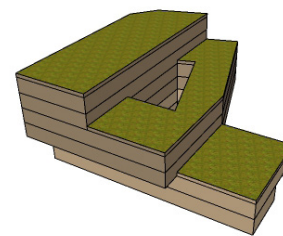
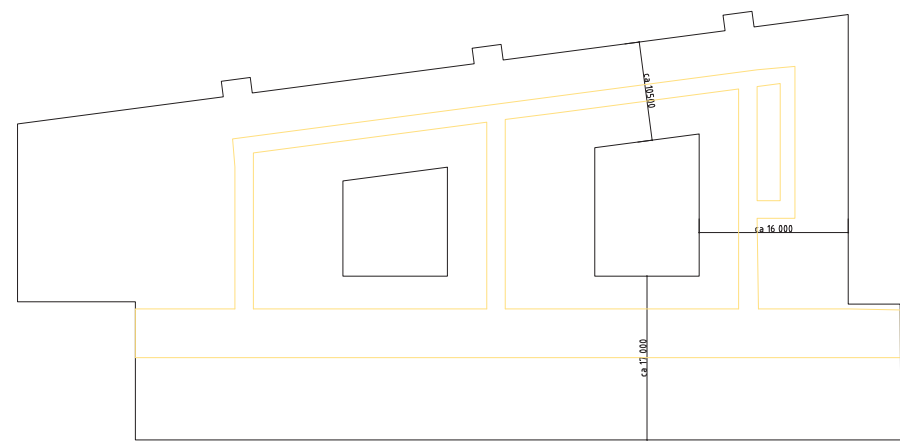


Plan 3, 4  
1940kvm

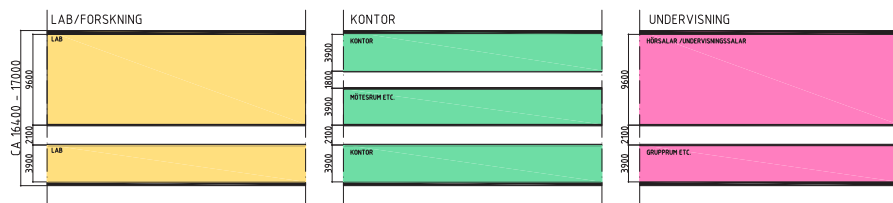
Från plan 3 kragar volymen ut mot svartån/  
slussen och mot Slussgränd



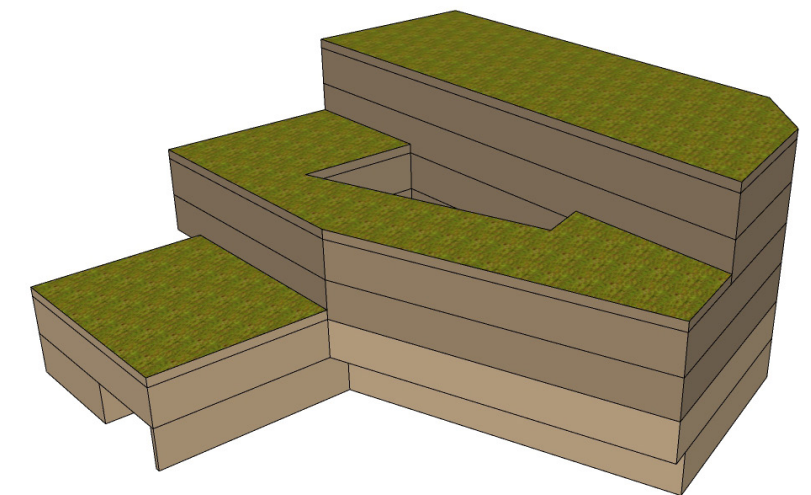
Plan 5, 6  
1100 kvm

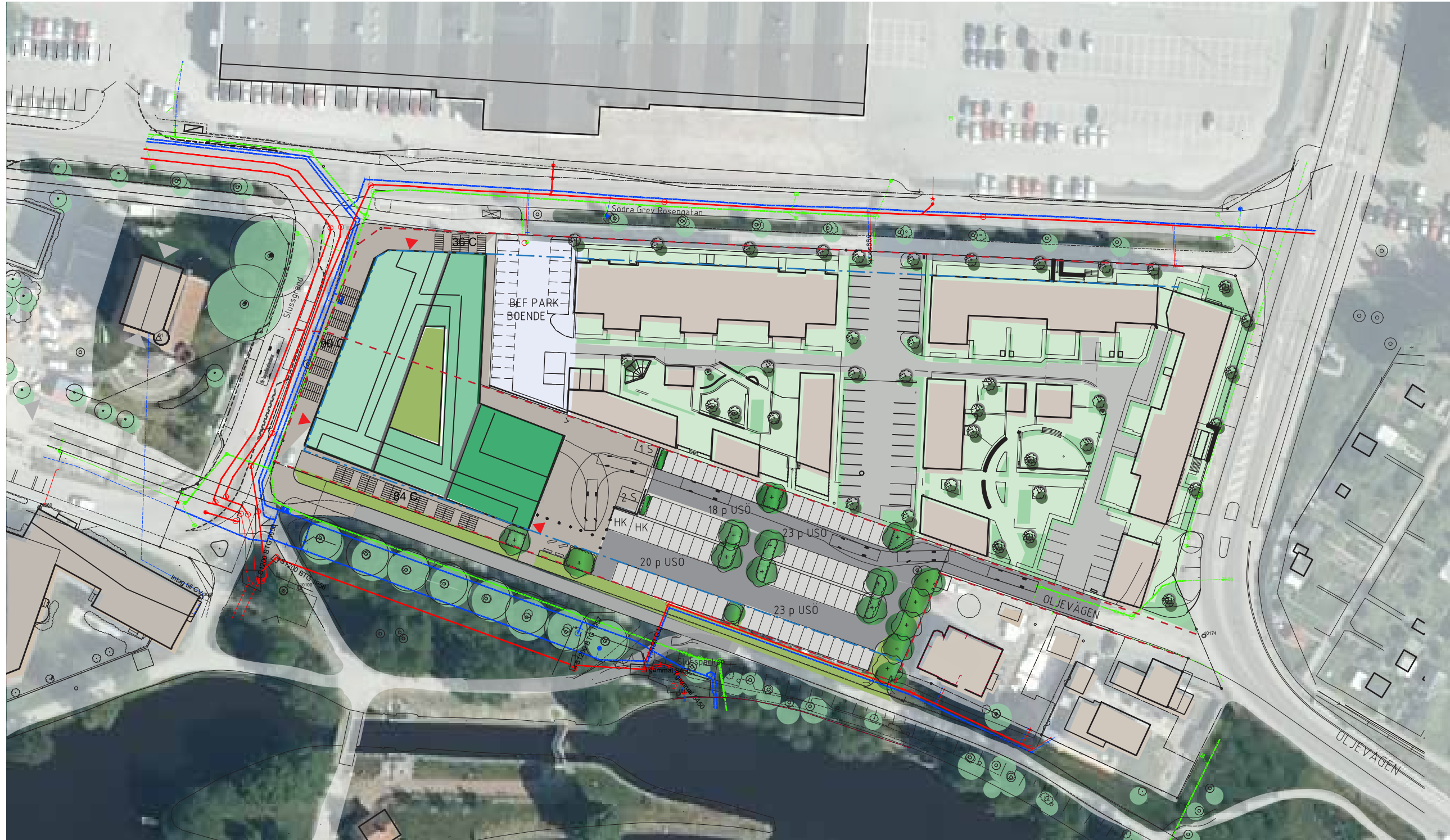


Plan 1	1800
Plan 2	2060
Plan 3	1940
Plan 4	1940
Plan 5	1130
Plan 6	1130
<b>summa</b>	<b>10000</b>



Referens, principplan för Campus USÖ





P-norm enligt Campus USÖ/kommunen 50% kontor 50% gymnasieskola  
 Underlag BTA 10 000 m<sup>2</sup>

P norm cykel  
 $5 \times 12 + 5 \times 30 = 60 + 150 = 210$  c  
 Förslag  $36 + 90 + 84 = 210$  c  
 Varav 84 i skydd dvs 40 %

P norm bil  
 $5 \times 12 + 5 \times 9 = 60 + 45 = 105$  P  
 Förslag 84 P

